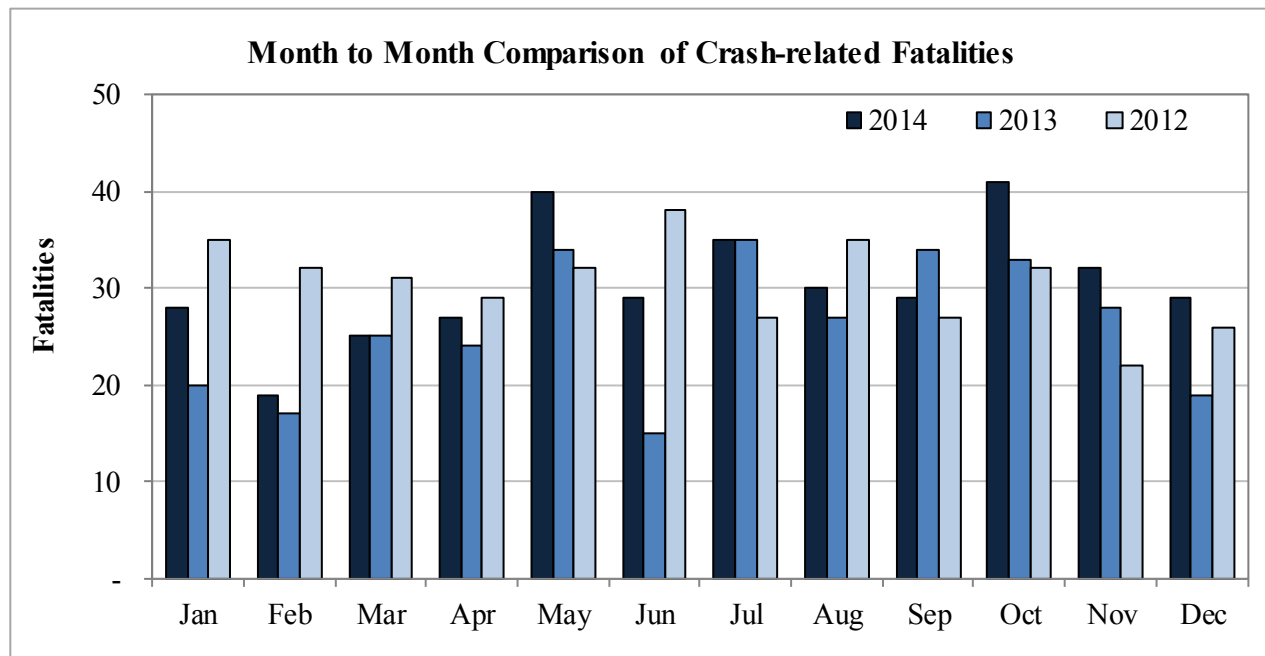


New Mexico Monthly Traffic Fatality Report, 2014

Produced for the New Mexico DOT - Planning and Traffic Safety Division under Contract # 5801
by the UNM Geospatial and Population Studies Traffic Research Unit (TRU)

Fatalities by Month 2014, 2013 and 2012, Year to Date			
Month	2014	2013	2012
January	28	20	35
February	19	17	32
March	25	25	31
April	27	24	29
May	40	34	32
June	29	15	38
July	35	35	27
August	30	27	35
September	29	34	27
October	41	33	32
November	32	28	22
December	29	19	26
Total	364	311	366



Fatalities by Vehicle Type, 2014 to Date										
Month in 2014	Cars	Pickup Trucks	Semi Trucks	Vans, SUVs, Utility Vehicles	ATV (4W)	Motorcyclists	Pedestrians	Pedalcyclists	Vehicle Type Unknown or Other	Total Fatalities
January	11	2	3	3	-	3	6	-	-	28
February	10	4	2	-	-	-	3	-	-	19
March	9	5	1	3	-	2	5	-	-	25
April	13	1	2	1	-	4	6	-	-	27
May	19	3	2	1	1	6	7	1	-	40
June	11	-	4	1	2	7	4	-	-	29
July	11	5	2	4	2	3	8	-	-	35
August	8	-	3	6	2	5	6	-	-	30
September	7	6	2	2	-	6	4	2	-	29
October	21	5	5	1	1	4	3	1	-	41
November	13	2	2	2	1	4	8	-	-	32
December	15	2	3	-	-	-	9	-	-	29
Total	148	35	31	24	9	44	69	4	-	364

Fatalities by Alcohol Involvement ¹ , 2014 to Date				
Month in 2014	Alcohol-involved ¹	Not Alcohol-involved	Alcohol Unknown	Total Fatalities
January	10	18	-	28
February	8	11	-	19
March	12	13	-	25
April	10	17	-	27
May	17	23	-	40
June	12	17	-	29
July	22	13	-	35
August	8	22	-	30
September	15	14	-	29
October	17	24	-	41
November	9	23	-	32
December	6	23	-	29
Total	146	218	-	364

¹ All fatalities in alcohol-involved crashes.

Alcohol-involved ¹ Fatalities, Year to Date			
Month	2014	2013	2012
January	10	9	18
February	8	7	13
March	12	14	21
April	10	11	11
May	17	17	14
June	12	5	16
July	22	16	9
August	8	13	12
September	15	15	11
October	17	15	11
November	9	10	5
December	6	5	12
Total	146	137	153

¹ All fatalities in alcohol-involved crashes.

Fatalities Under 21, 2014 to Date	
Age	Fatalities
1	3
2	1
3	1
4	-
5	-
6	1
7	2
8	-
9	1
10	-
11	-
12	1
13	1
14	2
15	1
16	2
17	5
18	5
19	5
20	15
Total	46

Month in 2013	Total Fatalities, to Date	Alcohol-involved ¹ Fatalities, 2014 to Date			
		Motorcyclist Fatalities	Percent Motorcyclist Fatalities	Pedestrian Fatalities	Percent Pedestrian Fatalities
January	28	2	7.1%	1	3.6%
February	19	-	0.0%	1	5.3%
March	25	1	4.0%	3	12.0%
April	27	2	7.4%	2	7.4%
May	40	4	10.0%	4	10.0%
June	29	2	6.9%	3	10.3%
July	35	3	8.6%	6	17.1%
August	30	2	6.7%	3	10.0%
September	29	3	10.3%	3	10.3%
October	41	2	4.9%	1	2.4%
November	32	2	6.3%	3	9.4%
December	29	-	-	3	10.3%
Total	364	23	6.3%	33	9.1%

¹ All fatalities in alcohol-involved crashes.

Alcohol-involved ¹ Fatalities, 2014 to Date		
Alcohol-involved	146	40.1%
Not Alcohol-involved	218	59.9%
Alcohol Unknown	0	0.0%
Total	364	100.0%

¹ All fatalities in alcohol-involved crashes.

Motorcyclist/4W Helmet Usage, 2014 to Date	
Helmet Usage	Fatalities
Yes	1
No	50
Unknown	2
Total	53

Fatalities by Vehicle ¹ Occupant Seat Belt Usage, 2014 to Date				
Restraint	Yes	No	Unknown	Total
Seat Belt	63	144	-	207

¹ Total vehicle occupant fatalities. Excludes motorcyclist, 4W/ATV, semi truck, pedestrian and pedalcyclist fatalities.

Senior (65+) Fatalities, Year to Date	
Year	Fatalities
2012	62
2013	42
2014	33

Fatalities by Residency and Location, 2014 to Date				
Location	New Mexico Resident	Non-Resident	Unknown Residency	Total
Rural	167	62	5	234
Urban	122	5	3	130
Unknown	-	-	-	-
Total	289	67	8	364

Month to Month Comparison of Fatalities by Alcohol Involvement, Year to Date												
Month	2014 Fatalities				2013 Fatalities				2012 Fatalities			
	Alcohol-involved ¹			Total	Alcohol-involved ¹			Total	Alcohol-involved ¹			Total
	Yes	No	Unk		Yes	No	Unk		Yes	No	Unk	
January	10	18	-	28	9	11	-	20	18	17	-	35
February	8	11	-	19	7	10	-	17	13	19	-	32
March	12	13	-	25	14	11	-	25	21	10	-	31
April	10	17	-	27	11	13	-	24	11	18	-	29
May	17	23	-	40	17	17	-	34	14	18	-	32
June	12	17	-	29	5	10	-	15	16	22	-	38
July	22	13	-	35	16	19	-	35	9	18	-	27
August	8	22	-	30	13	14	-	27	12	23	-	35
September	15	14	-	29	15	19	-	34	11	16	-	27
October	17	24	-	41	15	18	-	33	11	21	-	32
November	9	23	-	32	10	18	-	28	5	17	-	22
December	6	23	-	29	5	14	-	19	12	14	-	26
Total	146	218	-	364	137	174	-	311	153	213	-	366

¹ Identifies whether the fatality resulted from an alcohol-involved crash.

Month to Month Comparison of Fatalities by Seat Belt Usage, Year to Date												
Month	2014 Fatalities				2013 Fatalities				2012 Fatalities			
	Seat Belt ¹			Total ²	Seat Belt ¹			Total ²	Seat Belt ¹			Total ²
	Yes	No	Unk		Yes	No	Unk		Yes	No	Unk	
January	7	9	-	16	2	8	-	10	8	18	-	26
February	7	7	-	14	3	7	-	10	7	11	-	18
March	2	15	-	17	7	8	2	17	8	11	-	19
April	2	13	-	15	6	14	-	20	9	10	-	19
May	8	15	-	23	10	8	-	18	2	16	-	18
June	2	10	-	12	1	8	-	9	10	14	-	24
July	7	13	-	20	6	15	-	21	7	7	-	14
August	5	9	-	14	3	13	-	16	5	15	-	20
September	5	10	-	15	3	19	-	22	5	7	-	12
October	10	17	-	27	12	6	-	18	9	11	-	20
November	4	13	-	17	7	13	-	20	8	9	-	17
December	4	13	-	17	-	11	-	11	4	9	-	13
Total	63	144	-	207	60	130	2	192	82	138	-	220

¹ Identifies whether a vehicle occupant was belted (Yes), unbelted (No), or belt usage was not reported (Unk).

² Total vehicle occupant fatalities. Excludes motorcyclist, 4W/ATV, semi truck, pedestrian and pedalcyclist fatalities.

Fatalities by County and Month, 2014 to Date

County	Jan.	Feb.	Mar.	Apr.	May	Jun.	Jul.	Aug.	Sep.	Oct.	Nov.	Dec.	2014 Total, to Date	2013 Total, to Date
Bernalillo	4	1	6	4	7	6	6	7	4	8	9	4	66	50
Catron	-	-	-	-	1	-	-	-	-	-	-	-	1	6
Chaves	-	-	2	-	-	1	-	-	1	-	-	3	7	10
Cibola	-	-	-	-	1	-	1	3	1	-	1	-	7	16
Colfax	1	-	-	1	2	1	-	1	1	-	-	-	7	6
Curry	-	-	-	-	-	-	1	-	1	-	-	-	2	4
De Baca	-	-	-	-	-	-	-	-	-	-	-	-	-	2
Doña Ana	-	1	1	3	-	1	-	3	-	7	2	2	20	14
Eddy	2	1	1	6	2	-	-	-	-	4	-	-	16	15
Grant	1	-	-	-	-	-	-	-	-	-	-	-	1	5
Guadalupe	2	1	2	-	-	-	1	-	1	-	-	-	7	6
Harding	-	-	-	1	-	-	-	-	1	-	-	-	2	1
Hidalgo	2	-	1	-	7	-	-	-	-	-	-	-	10	1
Lea	1	2	2	1	2	2	3	3	3	7	1	4	31	12
Lincoln	-	-	-	1	-	-	3	-	-	-	-	1	5	4
Los Alamos	-	-	-	-	-	-	1	-	-	-	-	-	1	-
Luna	-	1	-	-	-	-	-	-	-	-	-	-	1	6
McKinley	3	3	4	3	6	1	1	3	3	2	6	6	41	26
Mora	1	-	-	-	-	-	2	-	1	-	-	-	4	3
Otero	3	-	2	1	1	3	1	-	1	1	-	-	13	8
Quay	-	2	-	-	-	-	4	-	-	1	3	1	11	6
Rio Arriba	-	-	-	1	1	4	1	-	-	1	1	-	9	13
Roosevelt	-	-	1	-	-	-	-	-	-	-	-	1	2	4
San Juan	2	2	-	2	3	3	4	5	8	3	2	2	36	27
San Miguel	-	-	-	-	-	-	-	1	1	1	-	-	3	7
Sandoval	-	1	-	-	1	3	-	-	-	1	2	3	11	18
Santa Fe	2	2	1	1	1	3	2	1	-	1	2	2	18	9
Sierra	-	-	-	-	1	-	1	-	-	-	-	-	2	4
Socorro	1	1	1	-	1	-	-	-	-	2	1	-	7	8
Taos	2	-	1	1	-	1	1	1	2	1	-	-	10	6
Torrance	-	-	-	-	1	-	2	-	-	1	-	-	4	11
Union	-	1	-	-	-	-	-	-	-	-	-	-	1	1
Valencia	1	-	-	1	2	-	-	2	-	-	2	-	8	2
Total	28	19	25	27	40	29	35	30	29	41	32	29	364	311

Fatalities by County Relating to Alcohol, Belt Use, and Under 21 BAC, 2014 to Date							
County	Alcohol-involved Fatalities ¹		Unbelted Fatalities		Under 21 (15-20) with a BAC ²		Total Fatalities
	Count	Percent ³	Count	Percent ³	Count	Percent ³	
Bernalillo	35	53.0%	19	28.8%	3	4.5%	66
Catron	1	100.0%	-	0.0%	-	0.0%	1
Chaves	3	42.9%	5	71.4%	-	0.0%	7
Cibola	1	14.3%	2	28.6%	-	0.0%	7
Colfax	3	42.9%	5	71.4%	-	0.0%	7
Curry	1	50.0%	1	50.0%	-	0.0%	2
De Baca	-	-	-	-	-	-	-
Doña Ana	10	50.0%	5	25.0%	1	5.0%	20
Eddy	2	12.5%	6	37.5%	-	0.0%	16
Grant	-	0.0%	1	100.0%	-	0.0%	1
Guadalupe	1	14.3%	2	28.6%	-	0.0%	7
Harding	-	0.0%	1	50.0%	-	0.0%	2
Hidalgo	-	0.0%	8	80.0%	-	0.0%	10
Lea	7	22.6%	6	19.4%	-	0.0%	31
Lincoln	3	60.0%	2	40.0%	-	0.0%	5
Los Alamos	-	0.0%	-	0.0%	-	0.0%	1
Luna	-	0.0%	-	0.0%	-	0.0%	1
McKinley	18	43.9%	17	41.5%	1	2.4%	41
Mora	2	50.0%	3	75.0%	1	25.0%	4
Otero	8	61.5%	4	30.8%	2	15.4%	13
Quay	2	18.2%	5	45.5%	-	0.0%	11
Rio Arriba	4	44.4%	6	66.7%	-	0.0%	9
Roosevelt	1	50.0%	2	100.0%	-	0.0%	2
San Juan	15	41.7%	14	38.9%	-	0.0%	36
San Miguel	2	66.7%	3	100.0%	-	0.0%	3
Sandoval	3	27.3%	7	63.6%	-	0.0%	11
Santa Fe	6	33.3%	4	22.2%	-	0.0%	18
Sierra	2	100.0%	1	50.0%	-	0.0%	2
Socorro	1	14.3%	5	71.4%	-	0.0%	7
Taos	6	60.0%	4	40.0%	1	10.0%	10
Torrance	2	50.0%	1	25.0%	-	0.0%	4
Union	1	100.0%	1	100.0%	-	0.0%	1
Valencia	6	75.0%	4	50.0%	-	0.0%	8
Total	146	40.1%	144	39.6%	9	2.5%	364

¹ All fatalities in alcohol-involved crashes.

² Fatalities under 21 with a reported BAC (Blood Alcohol Content) above zero.

³ Percentage based on total fatalities in the county.

Fatalities by Maintenance District and Month, 2014 to Date													
District	Jan.	Feb.	Mar.	Apr.	May	Jun.	Jul.	Aug.	Sep.	Oct.	Nov.	Dec.	Total
District 1	4	3	3	3	9	1	1	3	-	9	3	2	41
District 2	6	4	8	9	5	6	8	3	6	12	1	9	77
District 3	5	2	6	5	10	10	6	9	4	9	13	7	86
District 4	4	3	2	2	2	1	7	2	5	2	3	1	34
District 5	6	4	2	5	6	10	11	7	10	7	5	4	77
District 6	3	3	4	3	8	1	2	6	4	2	7	6	49
Total	28	19	25	27	40	29	35	30	29	41	32	29	364

Fatalities by Maintenance District Relating to Alcohol, Belt Use, and Under 21 BAC, 2014 to Date							
District	Alcohol-involved Fatalities ¹		Unbelted Fatalities		Under 21 (15-20) Fatalities with a BAC ²		Total Fatalities
	Count	Percent ³	Count	Percent ³	Count	Percent ³	
District 1	13	31.7%	20	48.8%	1	2.4%	41
District 2	25	32.5%	26	33.8%	2	2.6%	77
District 3	44	51.2%	30	34.9%	3	3.5%	86
District 4	11	32.4%	20	58.8%	1	2.9%	34
District 5	33	42.9%	29	37.7%	1	1.3%	77
District 6	20	40.8%	19	38.8%	1	2.0%	49
Total	146	40.1%	144	39.6%	9	2.5%	364

¹ All fatalities in alcohol-involved crashes.

² Fatalities under 21 with a reported BAC (Blood Alcohol Content) above zero.

³ Percentage based on total fatalities in the district